

MONTHLY MEMBERSHIP PROGRESS REPORT

District 31 L

Results as of: 3/31/2024

GMT:

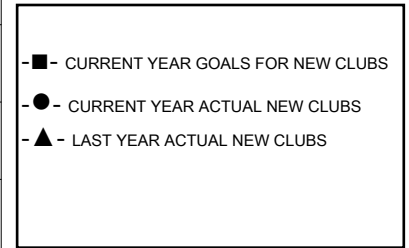
LOCATION NORTH CAROLINA

GMT CA

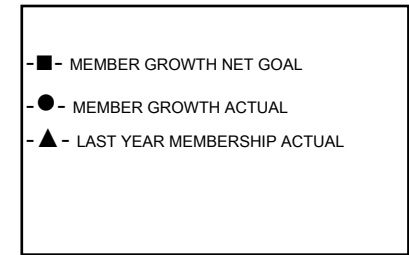
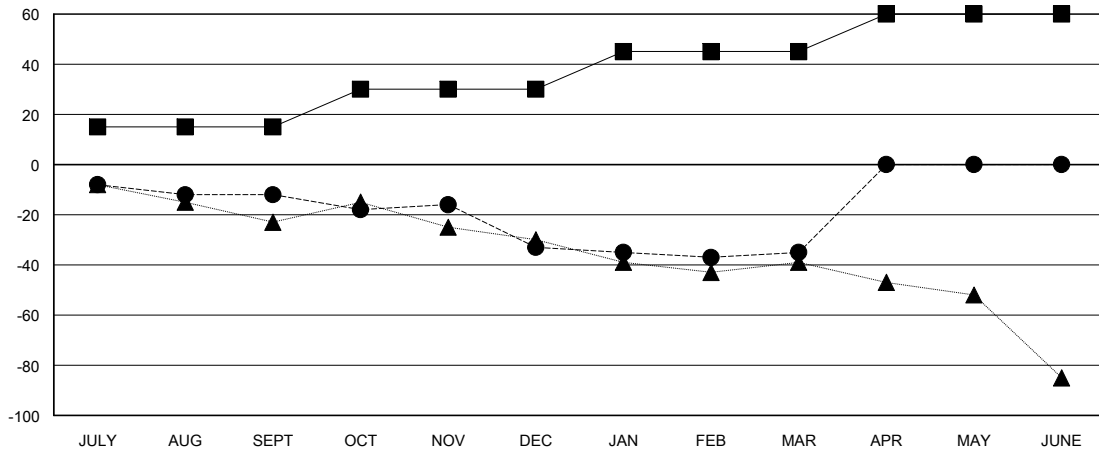
Clubs			
RESULTS FOR 2023-2024			
QUARTER	NEW CLUB GOAL	NEW CLUBS	DROPPED CLUBS
JULY/AUG/SEPT	0	0	2
OCT/NOV/DEC	1	0	1
JAN/FEB/MAR	0	0	0
APR/MAY/JUNE	0	0	0

Members			
RESULTS FOR 2023-2024			
QUARTER	MEMBER GROWTH NET GOAL	MEMBER GROWTH ACTUAL	DROPPED MEMBERS ACTUAL (including transfers)
JULY/AUG/SEPT	15	24	31
OCT/NOV/DEC	15	18	39
JAN/FEB/MAR	15	22	21
APR/MAY/JUNE	15	0	0

GOALS AND ACTUAL NEW CLUBS CUMULATIVE



GOALS AND ACTUAL MEMBERS CUMULATIVE



DROPPED CLUBS: 3	22 CLUBS OF 49 ADDED 1 OR MORE NEW MEMBERS	GENDER DISTRIBUTION	
		MALE 418 (59.71%)	FEMALE 282 (40.29%)
DROPPED MEMBERS		CLICK HERE FOR CUMULATIVE MEMBERSHIP DATA	TOTAL FAMILY UNIT MEMBERS 167
DECEASED 15	CLUB CANCELLED 13		FAMILY MEMBERS PAYING HALF DUES 86
OTHER 63	TOTAL 91		